

## Resources for Families with Young Children

### Identifying Available Child Care Options and Child Development Programs

- You can find Head Start programs in your area by using this [center locator](#): just enter your zip code and you'll find a list of local providers.
- You can also call 211 or visit [211childcare.org](http://211childcare.org) to receive guidance on other local child care options and assistance as well as information about child development programs including:
  - **School Readiness** (ages 3-4)
  - **Head Start** (ages 3-5)
  - **Early Head Start** (pregnant women-children under 3)
  - **Local Childcare Centers** and **In-home Family Childcare Centers**
  - **Care4Kids** (Assists low to moderate income Connecticut families in paying for childcare costs.)
  - **Connecticut 211 Child Development** (Offers information on programs to support parents in promoting the healthy growth and development of their children.)
    - Details about each of these child development programs can be reviewed in the following guide:

2·1·1

Child Development

# 211 Child Development

2·1·1

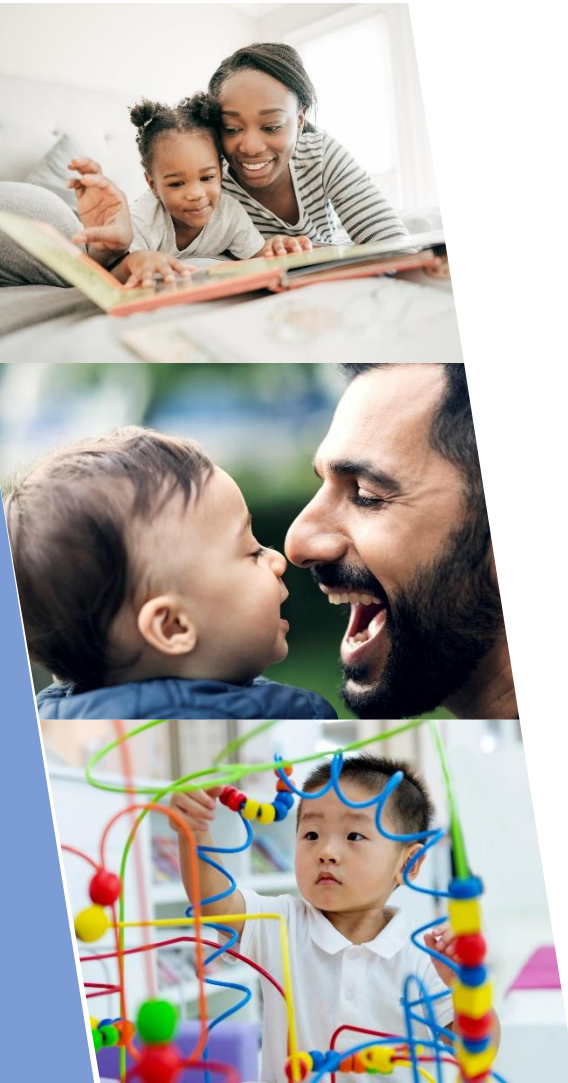
Connecticut

## Supporting parents and children

- ▶ Parental supports for children's healthy growth and development starting from pregnancy.
- ▶ Birth to Three, Help Me Grow, Early Childhood Special Education + Children/Youth with Special Health Care Needs programs.
- ▶ Developmental and behavioral screening + follow up using the Ages & Stages Questionnaires® using the Sparkler app by mail, on-line.

## By the numbers, in FY 2021:

- ▶ 10,173 Birth to Three referrals
- ▶ 8,513 children participating with the Ages and Stages Questionnaires
- ▶ 2,656 referrals to Help Me Grow
- ▶ 471 referrals for Early Childhood Special Education
- ▶ 206 referrals for Children/Youth with Special Health Care Needs



# 211 Child Development

## 1-800-505-7000



211 Child Development, a specialized call center of United Way 2-1-1, supports families who have questions or concerns about their child's development or behavior, and helps them connect to appropriate services.

### **Care Coordinators provide:**

- Assessment of needs & referrals to services
- Education on development, behavior management and programs
- Ongoing developmental monitoring
- Advocacy and follow up

# Connecticut 211 Child Development

The Gateway to Help and Referrals for  
Parents ● Providers ● Pediatric Professionals

**1-800-505-7000**

## Connecticut Birth to Three System

*Birth to 36 months of age*

*For children birth-36 months of age with developmental delays or disabilities.*

- Free Developmental Evaluation
- Service Coordination
- Individualized Family Service Plan (IFSP)
- Services from Early Childhood Therapists and Teachers as identified in the IFSP
- Focus on assisting families through natural routines and activities

## Help Me Grow

*Pregnancy through Age 8*

*For pregnant women and children birth through age 8 considered 'at-risk' for developmental or behavioral problems*

- Pregnancy support
- Connects families to community based resources
- Provides Ages and Stages child monitoring program via Sparkler, online or mailed questionnaire
- Trains child health providers in developmental screening
- Facilitates regional community networking

## Early Childhood Special Education

*Ages 3 through 5*

*For children ages 3 through 5 who are found eligible for special education services*

- Evaluation
- Services to eligible children:
  - Individualized Education Program (IEP)
  - Special education and related services

## Children and Youth with Special Health Care Needs

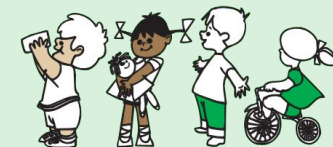
*Birth to Age 21*

*For children and youth birth to age 21 with chronic physical, developmental, behavioral, or emotional conditions who require more health and related services than other children the same age.*

- Service Needs Assessment
- Care Coordination
- Benefits Coordination
- Family/Caregiver Support
- Respite Planning
- Links to medical home initiative
- Referrals to community based resources
- Transition Planning

## Participating Agencies

- Department of Education
- Department of Public Health
- Office of Early Childhood
- United Way of Connecticut



July 2008

# Help Me Grow

For families with questions about their child's development or behavior

- ▶ Offers free developmental monitoring and screening through on-line / mail-out questionnaire called Ages & Stages (ASQ-3 and ASQ-SE2), as well as through the Sparkler app
- ▶ Information about children's typical development and behavior
- ▶ Connects to community-based programs and services
- ▶ Connects community providers with networking and training opportunities
- ▶ Offers follow up and advocacy if needed



# In-Home Family Supports

**For pregnant women and families of children birth to age five needing in-home supports**

- ▶ Pregnancy related information
- ▶ Linkages to health care, childbirth education and nutritional supports
- ▶ Intensive support for parenting and healthy child development
- ▶ Connections to in-home supports (home visiting)





# CT Birth to Three System

## **For families of infants/toddlers with significant delays or disabilities**

- ▶ Developmental evaluation for child with suspected delay
- ▶ If eligible:
  - ▶ Family receives individualized plan of services and supports (IFSP)
  - ▶ Guidance for families to teach child age-appropriate skills during daily routines
  - ▶ Coordination of supports and referrals to community services

# Early Childhood Special Education

## For children needing special education services



- ▶ Information on how to make a referral and connect to local school district
- ▶ Developmental evaluation through school if there are concerns
- ▶ Eligibility based on evaluation
- ▶ If eligible, special education and related services identified on individualized educational program (IEP)



# Children & Youth with Special Health Care Needs

**For children and youth with chronic physical, developmental, behavioral or emotional conditions requiring more health or related services than other children the same age**

- ▶ Service needs assessment
- ▶ Family Caregiver support
- ▶ Respite planning
- ▶ Links to medical home initiative
- ▶ Referrals to community based resources
- ▶ Transition planning
- ▶ Regional Community Care Coordinators meetings



# Case Examples

- Mom called with a concern about her 2 year old son, who is having difficulty at daycare. He is hitting and biting, and has been sent home because of his behavior. The mom brought him in to see the doctor, who did not find any medical reasons for his behavior and referred her to 211 Child Development.
- Doctor made a referral for a 3 year old child who is not saying many words.
- Dad called because he feels his son with autism is not getting enough support in school.
- Pregnant woman called because she needs baby clothing and furniture.

# How to make a referral

- ▶ Call 1-800-505-7000 - open Monday through Friday from 8am-6pm
- ▶ Fax referral to 860-571-6853
- ▶ Make on-line referral:  
<https://cdi.211ct.org/cdireferralform/>

# 211 Child Development Website

<http://cdi.211ct.org>

- ▶ Search by program to learn what they offer and how they work
- ▶ Search by age to learn about developmental milestones for various ages from pregnancy throughout childhood
- ▶ Search by age and question to see which programs may be of assistance to you
- ▶ Sign up to receive developmental questionnaires to monitor your child's development (Ages and Stages)
- ▶ Find links to additional resources
- ▶ Use Google translate for information in other languages
- ▶ Easy on-line referral form

Thank you!

